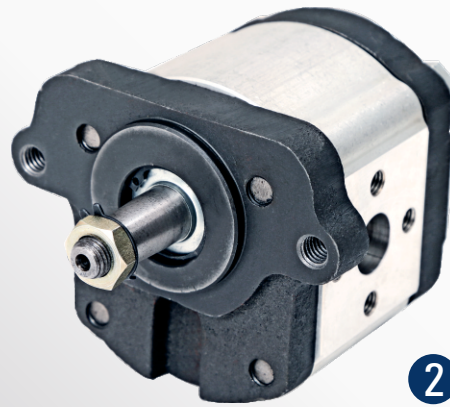
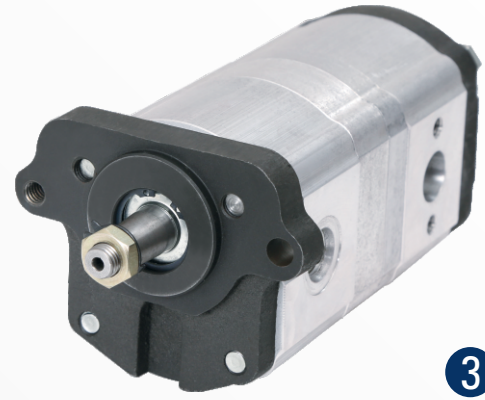




1



2



3

TECHNICAL DATA

Tractor & Model	Fig. No	Model	OEM Number	Flow
MF 373 393 LANDINI 6530, 6860, 6880	2	HP-662	353391 M91/354941 M91 (REF. NO. 662 525 339)	11 CC
MF/LANDINI 4500, 5000 5500, 5830	1	HP-664	3539858 M91 (REF. NO. 664 525 313/344)	11 CC
LANDINI 2500 6830, 7830, 8830, 6840, 7500, 7860	1	HP-665	3539857 M91 (REF. NO. 665 525 042)	11 CC
LANDINI 6500, 7500, 8500, 6830, 7830, (BHREF.# 625 016)	1	HP-666	3539857 M91 (REF. NO. 666 625 016)	16 CC
MF 154F, 154S, 164S, 174S184S, 194F	1	HP-674	3539859 M91 (REF. NO. 674 425 309)	8 CC
LANDINI	2	HP-733	LN3543134 M91	11 CC
LANDINI	3	HP-734	LN3655 100J9A	8+11 CC